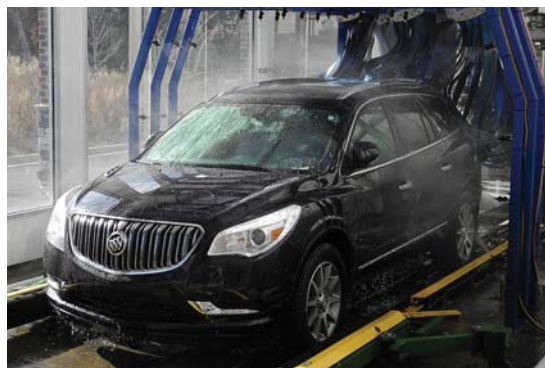




Cola[®]Mulse CS400

Highly Effective Emulsifier for Spray Waxes in Transportation Cleaning

LISTINGS TSCA (US), DSL (Canada), AICS (Australia), IECSC (China), NZIoC (New Zealand)



Cola[®]Mulse CS400 is a non-flammable cationic emulsifier designed to create micro emulsions of mineral seal oil and other hydrophobes in water. The combination of this powerful cationic surfactant with the mineral seal oil makes very effective drying agents for automatic car wash systems to remove water with balanced beading and sheeting actions.

BENEFITS

- Non-flammable – more convenient for storage and shipping
- Easy blending with minimum viscosity variations
- Balanced beading and sheeting
- Substantive to surface
- Minimizes spotting and streaking
- Promotes high shine and durable protection
- No thickening or gelling during dilution
- Reduces smearing on windshield

SPECIFICATIONS

| | |
|------------------|-----------------------------------------|
| Appearance, 25°C | Clear to slightly hazy* amber liquid |
| pH, 10% aqueous | 5.5 – 7.0 |
| Active, % | 85 – 90 |
| Moisture (KF), % | 5 – 10 |
| Flash Point | > 200°F |

* Slight haziness at the bottom of the container is normal and will not affect performance. Mix well before use.

FORMULATIONS

High Performance Economy Spray Wax

| INGREDIENT | v.1 | v.2 |
|--------------------------------------|------|------|
| 1 Mineral Seal Oil [†] | 14.5 | 20.0 |
| 2 Cola[®]Mulse CS400 | 13.4 | 18.4 |
| 3 Butyl Cellosolve | 2.1 | 2.9 |
| 4 Water | 70.0 | 58.7 |

Premium Spray Wax with Balanced Sheeting

| INGREDIENT | v.1 | v.2 |
|--------------------------------------|------|------|
| 1 Mineral Seal Oil [†] | 21.0 | 14.0 |
| 2 Cola[®]Mulse CS400 | 21.0 | 14.0 |
| 3 Butyl Cellosolve | 3.0 | 2.0 |
| 4 Water | 55.0 | 70.0 |

Spray Wax without Glycol Ether

| INGREDIENT | |
|--------------------------------------|------|
| 1 Mineral Seal Oil [†] | 29.0 |
| 2 Cola[®]Mulse CS400 | 22.1 |
| 4 Water | 48.9 |

Mixing directions: Combine first ingredients and mix thoroughly. Add water slowly while mixing until the blend is homogenous and clear.

[†] The mineral seal oil used is either Conosol[®] 260 or Calumet 600. If other brands are used, adjustments may be necessary. Please contact Technical Services for formulation support.

STORAGE AND HANDLING

Cola[®]Mulse CS400 should be stored in closed containers. Shelf life is 12 months from date of manufacture. A Safety Data Sheet is available upon request.

PACKAGING

Cola[®]Mulse CS400 is shipped in 55 gal. poly drums or totes.

Colonial Chemical, Inc.

225 Colonial Drive • South Pittsburg, TN 37380
Phone: 423-837-8800 • Fax: 423-837-3888

www.colonialchem.com